

Key Drivers and Risk Factors Impacting on Water Conservation and Demand Management

Presented by: Zama Siqalaba

BACKGROUND

- 🔥 DWA Rapid Response Programme
- 🔥 Development of a Comprehensive WC/WDM strategy for Fish to Tsitsikamma WMA
- 🔥 Luvuvhu-Letaba Reconciliation Strategy
- 🔥 Orange River System Reconciliation Strategy

BACKGROUND

- 🔥 Studies have covered over 40 municipalities
- 🔥 Data collection included:
 - Water balance information
 - Quantitative scorecards
 - Qualitative interviews

Institutional

Key risk factors

- 🔥 Vacancies
- 🔥 Ageing skills base
- 🔥 Lack of WC/WDM training t support existing capacity
- 🔥 Weak political support
 - Understanding water business
 - Understanding the urgency and need for implementation of WC/WDM



Ageing Skills Base



Lack of training



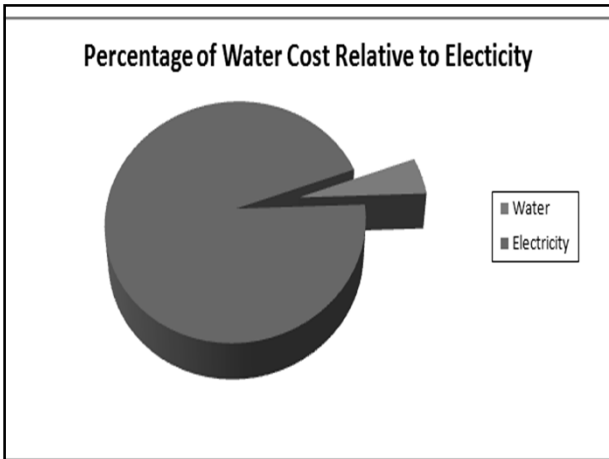
Key Driver: WC/WDM Champions Strong political leadership



Financial

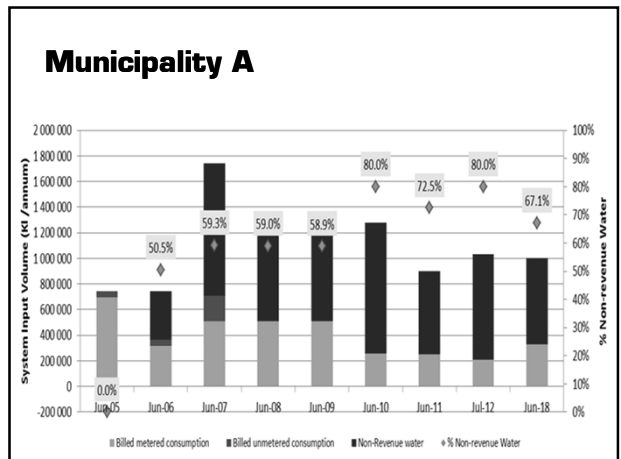
Key Risk Factors

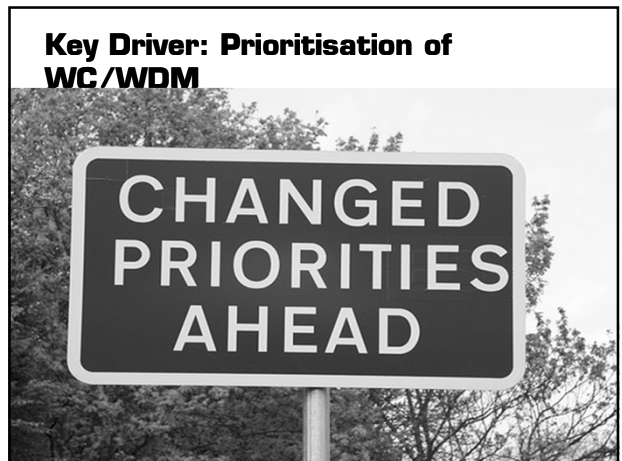
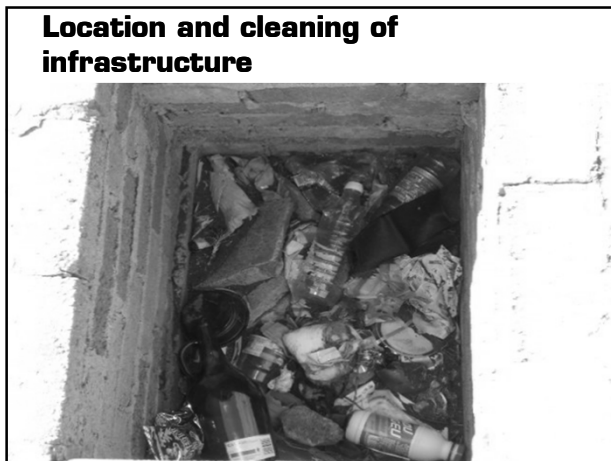
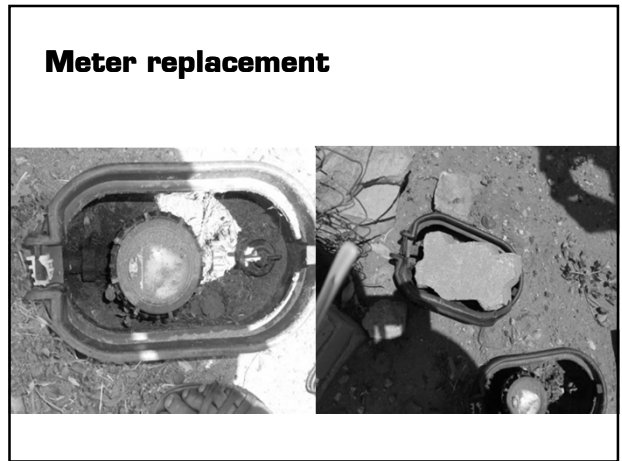
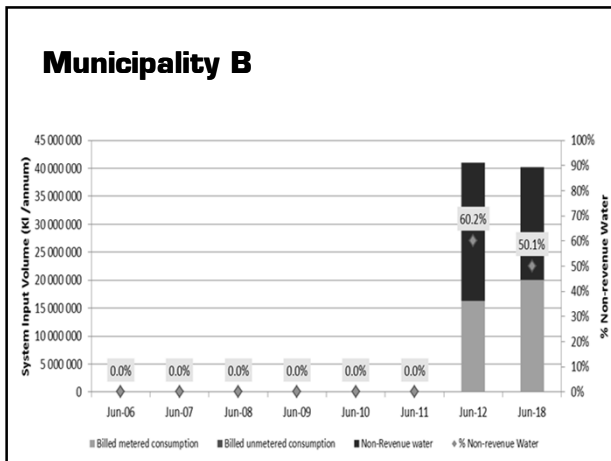
- 🔥 Budgeting for WC/WDM and infrastructure maintenance and budget expenditure
- 🔥 Ineffective tariff structures
- 🔥 Inadequate billing and metering
- 🔥 Cost recovery and enforcement of credit control policies
- 🔥 Indigent registration
- 🔥 Understanding and utilisation of key partnerships – i.e. public-private partnerships



Technical

- ### Key Risk Factors
- 🔥 Management information
 - 🔥 Leakage
 - 🔥 Lack of proactive system maintenance
 - 🔥 Meter replacement – cash register
 - 🔥 Location and cleaning of infrastructure







Social

- 🔥 Inefficient consumer water use
- 🔥 Culture of non payment for water
- 🔥 Angry and dissatisfied consumer base
- 🔥 Lack of employment - large indigent consumer base





Angry dissatisfied consumers



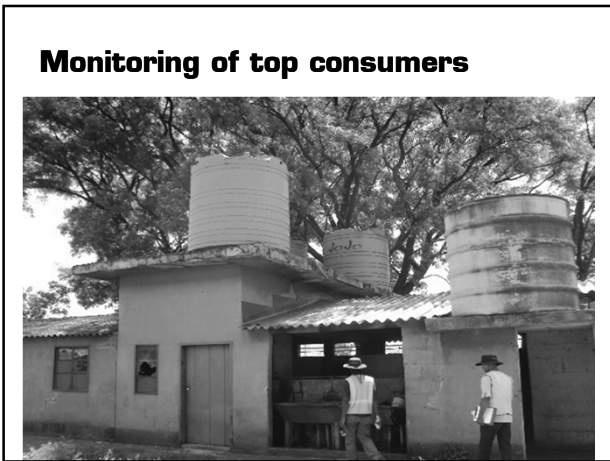
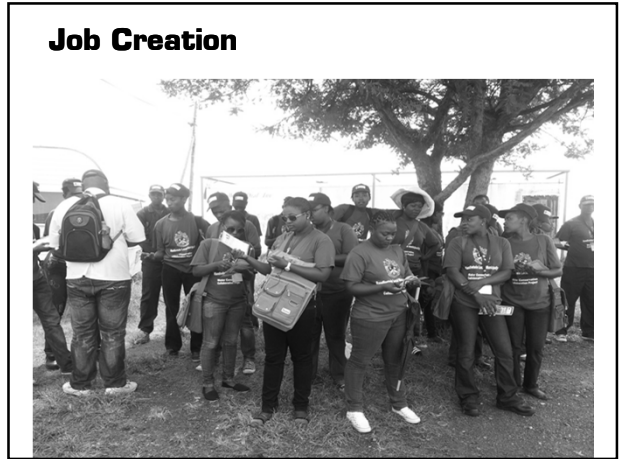
Lack of employment



Key Drivers

- 🔥 **Bylaw enforcement**
- 🔥 **Continuous education and awareness**
- 🔥 **Job creation**
- 🔥 **Multiple stakeholder engagement**
- 🔥 **Monitoring of top consumers**







CONCLUSIONS

🔥 Successful Municipalities with low NRW have

- Passionate skilled dedicated WC/WDM champions
- Sound management information
- Strong well equipped political leadership
- Good interdepartmental relationships
- Prioritise and budget for WC/WDM
- Undertake proactive maintenance
- Engage the communities
- Monitor consumers
- Bill and meter effectively

- Thank You -